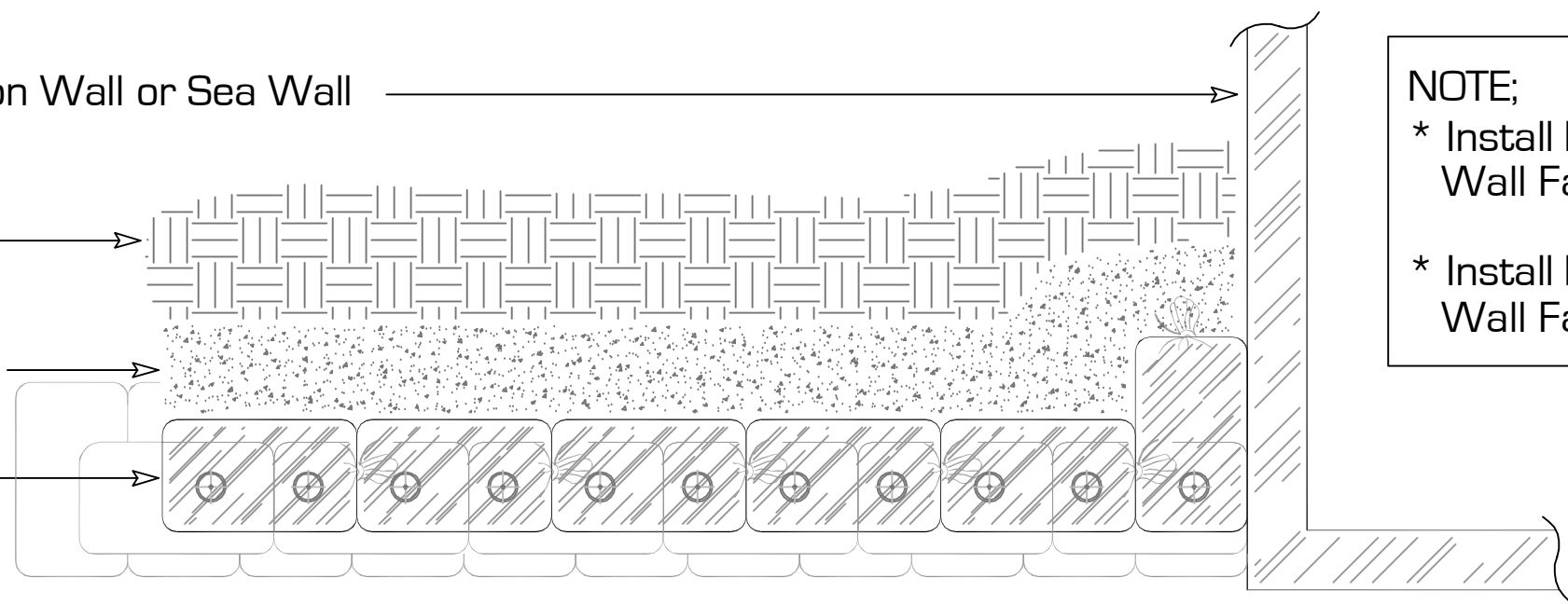


Existing Foundation Wall or Sea Wall

In-Situ Soil

On-Site or Imported Backfill

Envirolok Units



PLAN

NOTE;

* Install Envirolok Units Perpendicular to Wall Face at Foundation Abutment

* Install Envirolok Units Perpendicular to Wall Face for Base and Top Rows

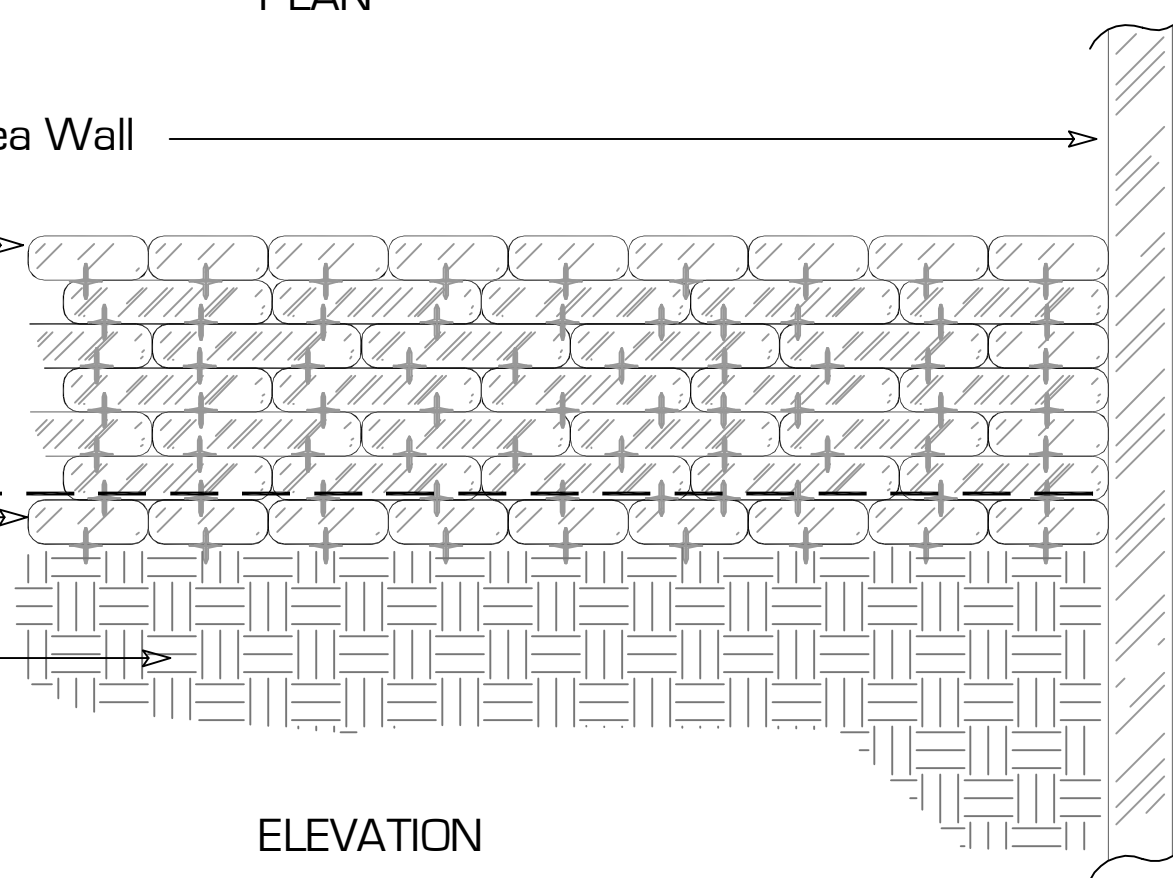
Existing Foundation Wall or Sea Wall

Top Row; Set Perpendicular to Wall Face

Finished Grade

Base Row; Set Perpendicular to Wall Face

In-Situ Soil



ELEVATION

This is a typical, non-site specific design. Envirolok LLC makes these documents available on an "as is" basis. All CAD (.dwg) and PDF (.pdf) files were created as a service to our customers. Final determination of the suitability of any information or material for the use contemplated, and its manner of use, is the sole responsibility of the user. A final project specific design should be prepared by a qualified, licensed, professional engineer. THIS DRAWING IS NOT FOR CONSTRUCTION. Copyright 2013, Envirolok LLC

PROJECT
ENVIROLOK INSTALLATION; FOUNDATION WALL ABUTMENT

DATE
JANUARY 2013
SHEET
SHEET 41

SCALE
1/2" = 1'-0"

EnvirolokTM
Vegetated Environmental Solutions

10101 N. Casey Road
www.envirolok.com
P. 608.223.3571
Evansville, WI 53536
ecosolutions@envirolok.com
F. 608.884.4640

REVISIONS