

Golf Course Applications

CASE STUDIES



CREEKBANK STABILIZATION



SWALE REPAIR



REPAIRING THE GREEN

+THE ENVIROLOK SYSTEM

The Envirolok System is a permanent vegetated solution for erosion and slope stabilization. Used for many different applications, Envirolok is designed to be easy to install, blend in with the surrounding environment and become stronger with age.

Our non-woven geotextile bags are one of a kind and create an encapsulated barrier, protecting the soil from erosion. The tan color allows them to blend better into the landscape and is proven to reduce heat in the bag's interior, promoting better germination and plant growth. Our patented spikes add shear strength and easily connect with other reinforcing technologies, making even the most difficult projects easy to install. Plant roots create a binding matrix through the bags and into the parent soil, locking the entire system into place, creating permanent stabilization.

Compared with other traditional walls, Envirolok can accommodate a variety of slope conditions and contours, making it the ideal solution. Every project is unique, and the Envirolok team is here to support you every step of the way.

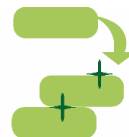
LIVING SHORELINES | WATERWAYS | SLOPES



DESIGN



FILL



INSTALL



VEGETATE

STREAMBANK STABILIZATION

Creebank stabilization can often be a tricky and costly problem to correct. Hard armor solutions such as wood or concrete walls stabilize the slope and look great upon installation but deteriorate quickly. Envirolok is a natural vegetated solution designed to stabilize slopes, stop erosion and stand the test of time. Unlike hard armoring, Envirolok strengthens with age as roots grow, creating a binding matrix through the bags and into the soil. This leads to secure slopes and the reassurance that Envirolok will last.

Lakewood Country Club

As the existing timber walls that lined Lakewood Gulch began to decay, the banks of this key waterway were in jeopardy. Envirolok was selected to replace the existing wall, stabilize the creekbank, improve aesthetics and create a naturalized corridor. Envirolok's flexibility and versatility minimized the construction footprint, allowing for continued use of the course without disruption. Since installation, the reinforced slope remains strong and shows no signs of damage from the waterway, wildlife, or golfers.

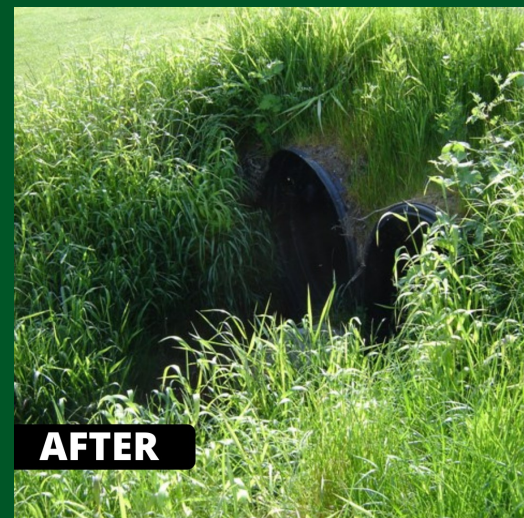
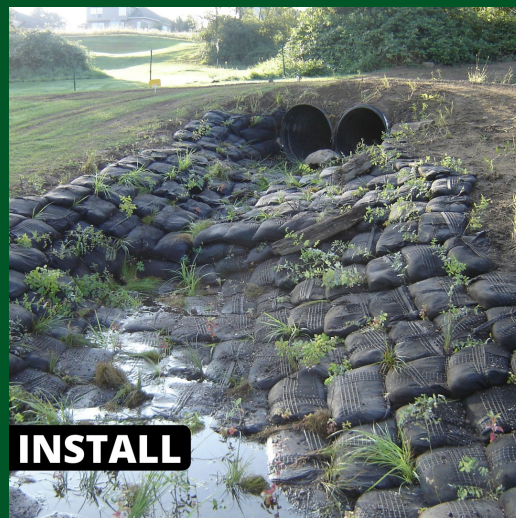


STORMWATER | STREAM CHANNEL REPAIR

Swales are a key part of water management and are vital in protecting the landscape from destructive water flows. However, the powerful scouring action of the water can undermine a swale, causing intense erosion. Envirolok builds a “mattress” of units that encapsulate the soil, prevent erosion, and serve as a medium for vegetative growth. The combination of native plantings and the engineered bag-fill provide opportunities to slow and filter the water before it leaves the channel, reducing sedimentation in ponds and basins, eliminating the need for costly pond and water quality maintenance.

Edgefield Country Club

A residential subdivision upstream of a stormwater swale increased impervious surface runoff causing severe scouring of more than four feet in a drainage ditch. The severe scouring was discovered after removing invasive vegetation, and water runoff led to sediment discharge in the wetlands below. Envirolok’s Patented system was used to build a barrier that encapsulated the soil, absorbed water energy, and provided a medium for plant growth. The project has successfully eliminated erosion, sedimentation and reduced the cost of maintenance in these water channels.





BUNKER REPAIR

For a golf course, the green must look pristine and well-manicured. However, golf courses see a lot of traffic from golfers, maintenance crews and critters, making it difficult to maintain clean edges and stable slopes. Let Envirolok do the hard work for you. Envirolok's design will provide the durable structure that you need while blending seamlessly into the surrounding area. Envirolok can be used for many different applications such as slope stabilization, erosion control, and lining bunkers to give them the structural support and finished look that golf courses want. Once the system is in place, you get to choose how to vegetate the system, whether that is hydroseeding, planting or installing sod for an instant fully vegetated look.

Heather Glen Golf Course

Heather Glen Golf Course used the Envirolok system to reinforce a bunker that was experiencing slope failure. The Envirolok system allowed them to follow the bunker's contours easily and provided a permanent vegetated solution. Envirolok allowed this golf course to reinforce this bunker while still maintaining the natural look of the green, adding to the golf course's aesthetics.

