

Control Surface Water by Diverting Overland Flow from Wall. Consult with an Engineer for Recommendations.

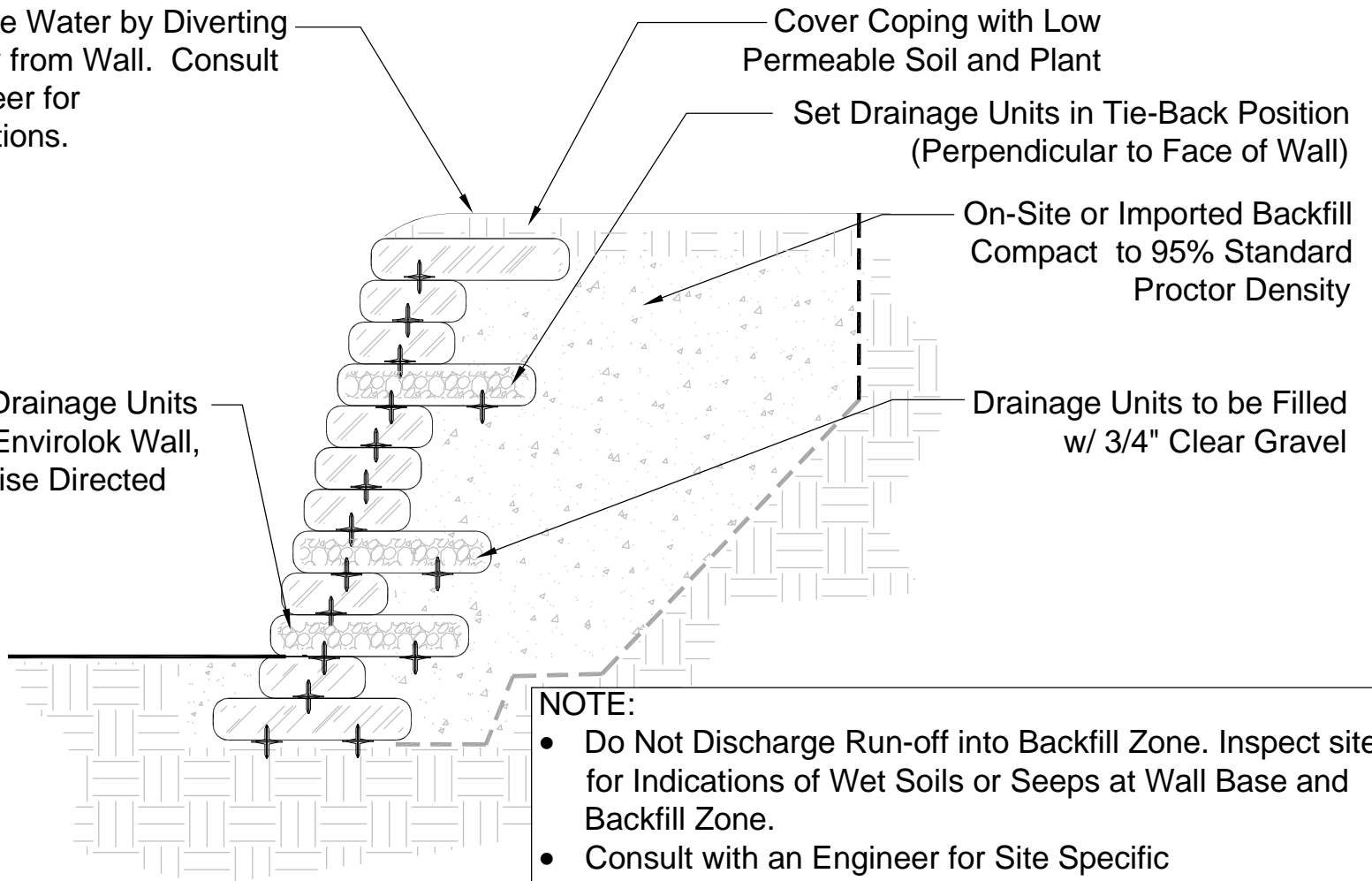
Cover Coping with Low Permeable Soil and Plant

Set Drainage Units in Tie-Back Position (Perpendicular to Face of Wall)

On-Site or Imported Backfill Compact to 95% Standard Proctor Density

Place Lowest Drainage Units Above Toe of Envirolok Wall, Unless Otherwise Directed By Engineer

Drainage Units to be Filled w/ 3/4" Clear Gravel



**SECTION**

- NOTE:**
- Do Not Discharge Run-off into Backfill Zone. Inspect site for Indications of Wet Soils or Seeps at Wall Base and Backfill Zone.
  - Consult with an Engineer for Site Specific Recommendations
  - See Sheet GN1-21 and Project Specifications for Additional Details & Installation Instructions

This is a typical, non-site specific design. Envirolok LLC makes these documents available on an "as is" basis. All CAD (.dwg) and PDF (.pdf) files were created as a service to our customers. Final determination of the suitability of any information or material for the use contemplated, and its manner of use, is the sole responsibility of the user. A final project specific design should be prepared by a qualified, licensed, professional engineer. THIS DRAWING IS NOT FOR CONSTRUCTION. Copyright 2020, Envirolok LLC

TITLE  
**DRAINAGE UNIT  
DETAIL**

DATE  
MARCH 2021

SCALE  
1/2" = 1' - 0"

SHEET  
SHEET D1-21



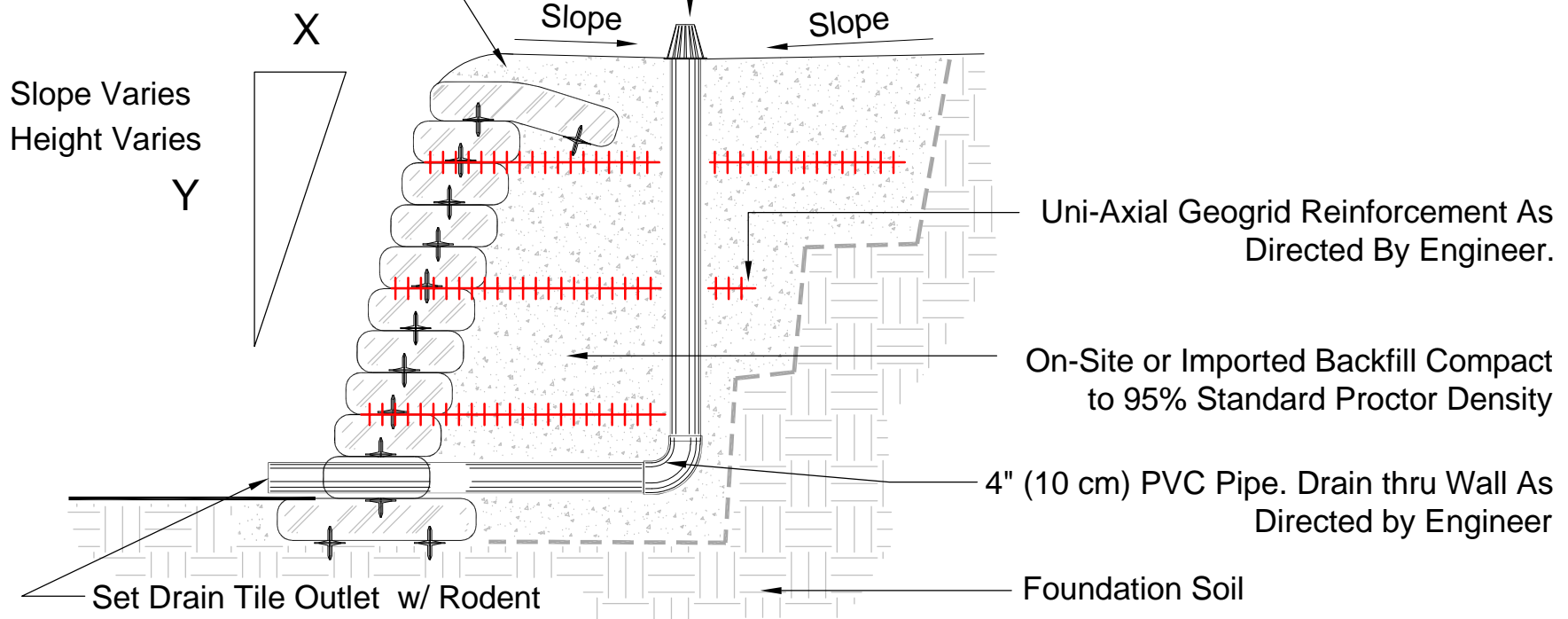
10101 N. Casey Road  
Evansville, WI 53536  
(P) 608.226.2565

www.envirolok.com  
ecosolutions@envirolok.com  
(F) 608.884.4640

REVISIONS

Cover Coping with Low Permeable Soil and Plant

Atrium Inlet Drain or Catch Basin. Connect to Drain Tile and Drain thru Wall



Slope Varies  
Height Varies  
Y

Uni-Axial Geogrid Reinforcement As Directed By Engineer.

On-Site or Imported Backfill Compact to 95% Standard Proctor Density

4" (10 cm) PVC Pipe. Drain thru Wall As Directed by Engineer

Set Drain Tile Outlet w/ Rodent Guard. Place Backfill Material to Eliminate Air Pockets/ Voids Between Drain Tile & Bag.

Foundation Soil

**SECTION**

**NOTE:**

- Atrium Drain Inlet or Catch Basin is Recommended in a Situation or where Surface Run-off is Directed Towards the Wall.
- Do Not Discharge Run-off into Backfill Zone. Inspect site for Indications of Wet Soils or Seeps at Wall Base and Backfill Zone.
- Consult with an Engineer for Site Specific Recommendations
- See Sheet GN1-21 and Project Specifications for Additional Details & Installation Instructions

This is a typical, non-site specific design. Envirolok LLC makes these documents available on an "as is" basis. All CAD (.dwg) and PDF (.pdf) files were created as a service to our customers. Final determination of the suitability of any information or material for the use contemplated, and its manner of use, is the sole responsibility of the user. A final project specific design should be prepared by a qualified, licensed, professional engineer. THIS DRAWING IS NOT FOR CONSTRUCTION. Copyright 2020, Envirolok LLC

TITLE  
**DRAINAGE INLET  
DETAIL**

DATE  
MARCH 2021

SCALE  
1/2" = 1' - 0"

SHEET  
SHEET D2-21



10101 N. Casey Road  
Evansville, WI 53536  
(P) 608.226.2565

www.envirolok.com  
ecosolutions@envirolok.com  
(F) 608.884.4640

REVISIONS

Cover Coping with Low Permeable Soil and Plant

Control Surface Water by Diverting Overland Flow from Wall. Consult with an Engineer for Recommendations.

On-Site or Imported Backfill. Compact to 95% Standard Proctor Density

Daylight Drain at Toe of Slope

Foundation Soil

Fabric Wrapped Drainage Layer or GeoComposite Drainage Blanket, 2/3 the Slope Height, 1/3 Coverage on the Slope. Verify w/ Engineer

Set Drain Tile Outlet w/ Rodent Guard. Place Backfill Material to Eliminate Air Pockets/ Voids Between Drain Tile & Bag.

**NOTE:**

- Do Not Discharge Run-off into Backfill Zone. Inspect site for Indications of Wet Soils or Seeps at Wall Base and Backfill Zone.
- Consult with an Engineer for Site Specific Recommendations
- See Sheet GN1-21 and Project Specifications for Additional Details & Installation Instructions

This is a typical, non-site specific design. Envirolok LLC makes these documents available on an "as is" basis. All CAD (.dwg) and PDF (.pdf) files were created as a service to our customers. Final determination of the suitability of any information or material for the use contemplated, and its manner of use, is the sole responsibility of the user. A final project specific design should be prepared by a qualified, licensed, professional engineer. THIS DRAWING IS NOT FOR CONSTRUCTION. Copyright 2020, Envirolok LLC

TITLE  
**BACK DRAIN INSTALLATION  
DETAIL**

DATE  
MARCH 2021

SCALE  
1/2" = 1' - 0"

SHEET  
SHEET D3-21



10101 N. Casey Road  
Evansville, WI 53536  
(P) 608.226.2565

www.envirolok.com  
ecosolutions@envirolok.com  
(F) 608.884.4640

REVISIONS

Set Drain Tile Outlet w/ Rodent Guard.  
Place Backfill Material to Eliminate Air Pockets/ Voids Between Drain Tile & Bag.

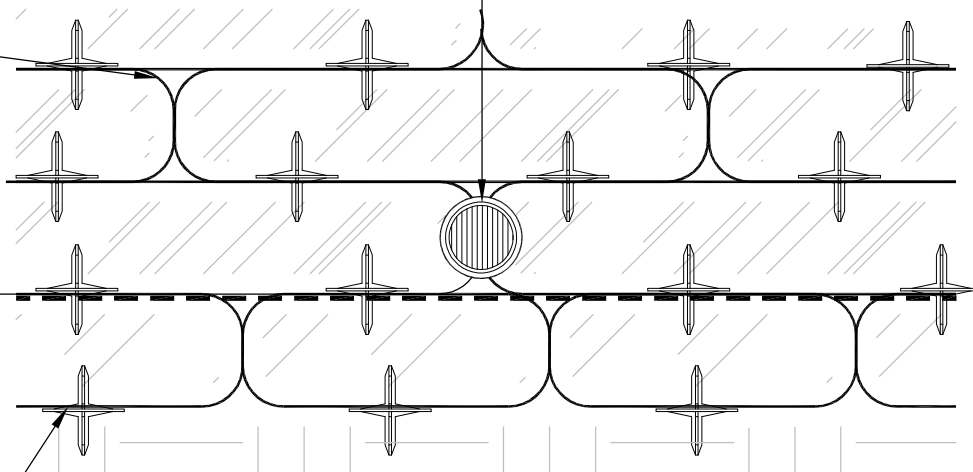
ELEVATION

Envirolok Unit, Typ.

Finished Grade

Foundation Course

Foundation Soil



**NOTE:**

- Do Not Discharge Run-off into Backfill Zone. Inspect site for Indications of Wet Soils or Seeps at Wall Base and Backfill Zone.
- Consult with an Engineer for Site Specific Recommendations
- See Sheet GN1-21 and Project Specifications for Additional Details & Installation Instructions

This is a typical, non-site specific design. Envirolok LLC makes these documents available on an "as is" basis. All CAD (.dwg) and PDF (.pdf) files were created as a service to our customers. Final determination of the suitability of any information or material for the use contemplated, and its manner of use, is the sole responsibility of the user. A final project specific design should be prepared by a qualified, licensed, professional engineer. THIS DRAWING IS NOT FOR CONSTRUCTION. Copyright 2020, Envirolok LLC

TITLE  
**DRAIN OUTLET  
DETAIL (4" DIA.)**

DATE  
MARCH 2021

SCALE  
1" = 1' - 0"

SHEET  
SHEET D4-21

 **Envirolok**™  
DESIGNED FOR NATURE...ENGINEERED FOR LIFE.

10101 N. Casey Road  
Evansville, WI 53536  
(P) 608.226.2565

www.envirolok.com  
ecosolutions@envirolok.com  
(F) 608.884.4640

REVISIONS